

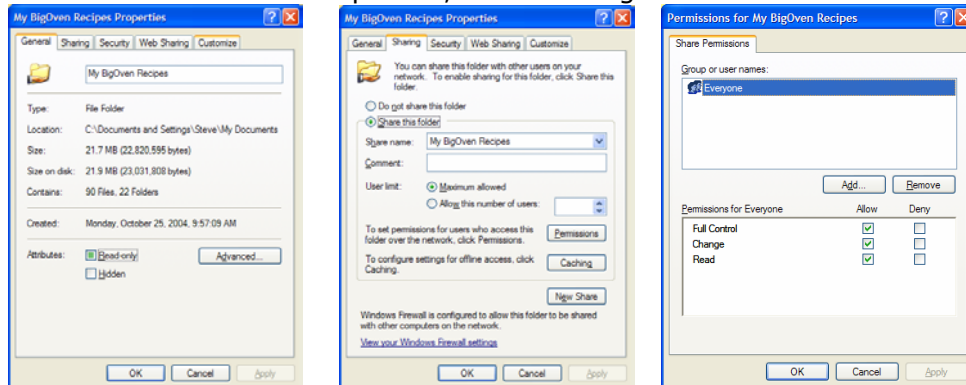
Using BigOven to Share Recipes and Shopping Lists on Your Network

You can share recipes and shopping lists on your network! This allows you to have one central grocery list and set of recipe boxes that you can access from anywhere in the house.

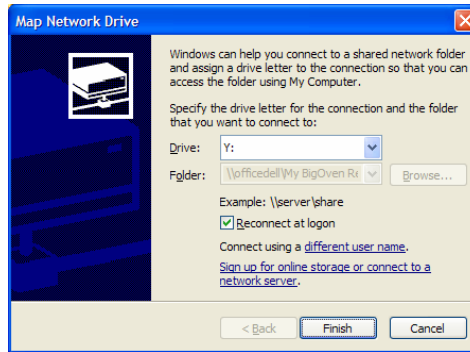
Prerequisites: Set up a local area network, either wired or wireless, and familiarize yourself with how to share files on a server. We do not provide technical support on basic networking issues. A good starting point is [How To Set Up Your Home Network](#), from PC World.

Step-by-Step

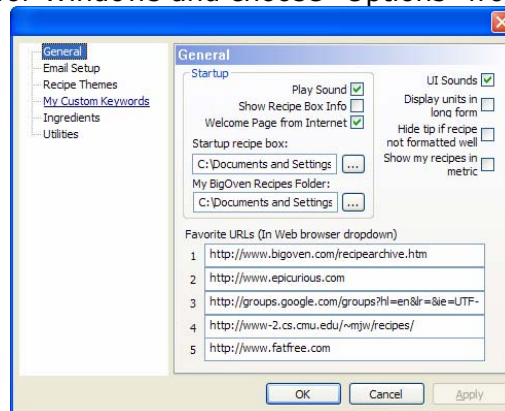
- 1) Determine which machine you'd like to be the "master server". In our example, this machine is called `\\officedell`.
- 2) On the master machine, bring up Windows Explorer and find your "My BigOven Recipes" folder, usually in your "My Documents" folder.
- 3) Share it out on the network, making sure to give full read/write/modify permissions to everybody. In Windows XP, you do this by right clicking on the folder and choose Properties, then Sharing...



- 4) Click on Share this folder, and then **be sure to click the Permissions button and allow 'Everyone' Full control, including change and read.**
- 5) Choose OK. If prompted, be sure to apply these settings to all subfolders as well.
- 6) For each client machine:
- 7) Log on as the user that is going to be using the BigOven program. (If multiple users are using the software on the client machine, you need to do the following steps for each user.) Open Windows Explorer and browse to `\\<servername>`
- 8) Find the folder "My BigOven Recipes" in the list, right click on it and choose "Map Network Drive"



- 9) Click Finish to create a "permanent" mapping of a drive letter to the server's "My BigOven Recipes" folder.
- 10) Launch BigOven for Windows and choose "Options" from the Tools menu.



- 11) You now just need to tell the BigOven client computer both the startup recipe box and the "My BigOven Recipes" folder that BigOven should use. Simply click the "..." button and find "standard.crb" on your server drive (for the example above, it's "Y:\rbox\standard\standard.crb" for the first answer, and "Y:\\" for the second answer – without the quotation marks of course). Click OK.
- 12) Close out of BigOven and relaunch the program.

TROUBLESHOOTING

"BigOven seems to load the shared data from the server just fine but won't let me modify it. E.g., I cannot add new recipes or change recipes or add items to the shopping list or meal calendar."

This clearly indicates that permissions on your server are not set correctly. Be sure to run through step 3 above, and make sure that all users have full permissions.

"BigOven gives me an error that it cannot find load the recipe box on startup"

Did you move the file location on the server? Use Tools/Options to specify both the opening recipe box (it can be any CRB file; we recommend standard.crb as a good place to start).

Did you specify the "My BigOven Recipes" folder in Tools/Options? Try doing so again.